

PEELVUE⁺

STERILISATION POUCHES

Trust.Worthy.Innovation.



PeelVue+. Don't take safety for granted. Now with closure validation!

Safety

External and **patented Internal Processing Indicators** built directly into each pouch.

Vents located on either side of the internal indicator to allow **the same ambient conditions** inside and outside the pouch.

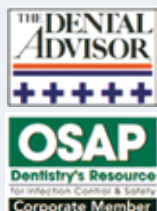
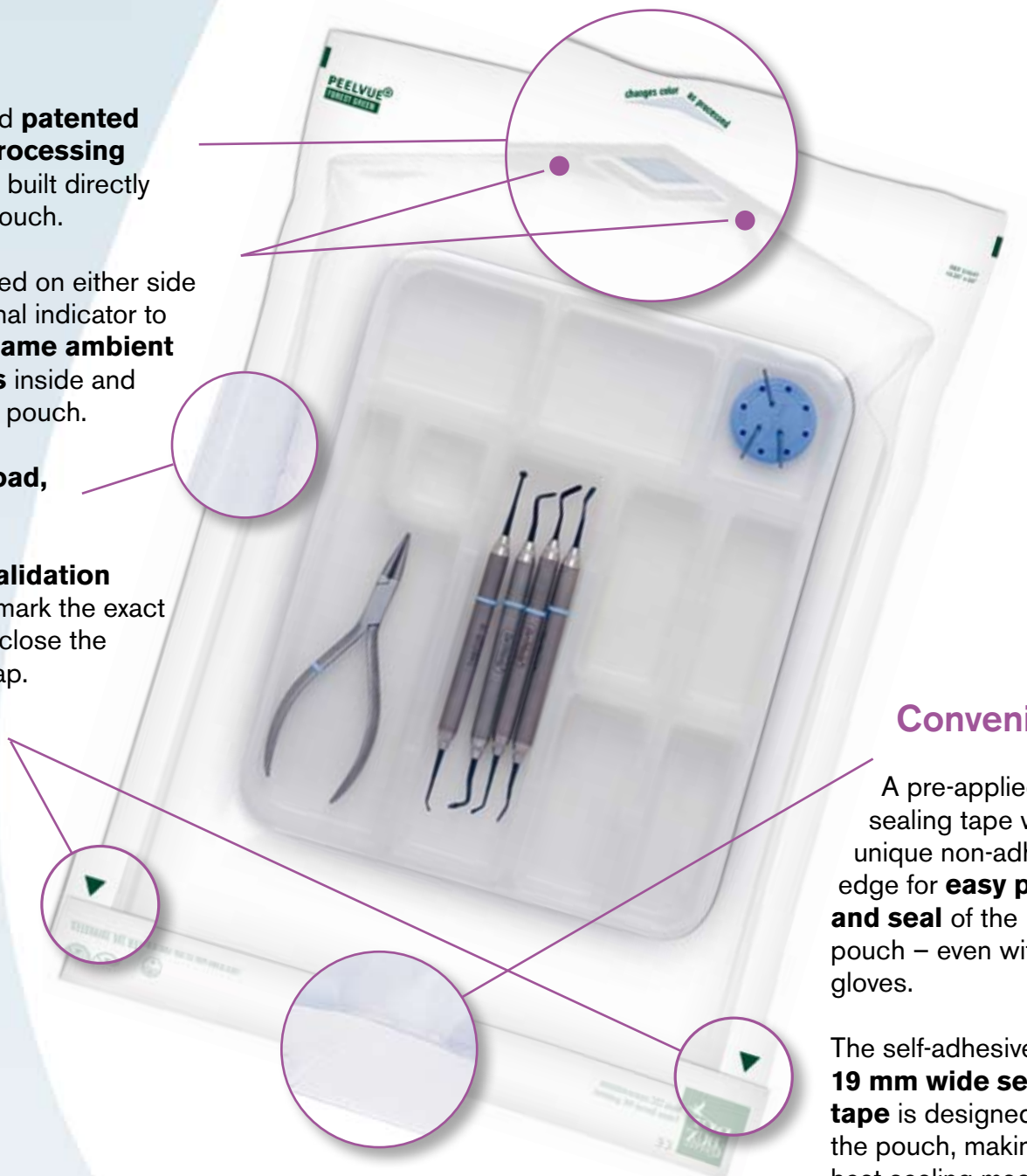
10 mm broad, safe seal.

Closure Validation (triangles) mark the exact position to close the adhesive flap.

Convenience

A pre-applied sealing tape with a unique non-adhesive edge for **easy peel and seal** of the pouch – even with gloves.

The self-adhesive **19 mm wide sealing tape** is designed into the pouch, making a heat sealing machine superfluous.



Safe, convenient, cost-effective and easy to use.



Various pouch sizes for all potential applications

Peel-Vue+ pouches are easy to peel and seal. They feature a patented Internal-Processing-Indicator (IPI) and are printed with lead-free inks on medical-grade, virgin, non-recycled paper. After removing the clear film, the paper side of the pouch can function as a sterilized tray liner.



| Ref. nbr. | Description | Size | Color | Quantity |
|-----------|---|-----------------------|-------|----------|
| 31610 | Implant, Dam Clamp | 90 x 135 mm | | 200 |
| 31611 | Handpiece, Hand Instrument | 2 70 x 230 mm | | 200 |
| 31612 | Handpiece, Hand Instrument | 90 x 230 mm | | 200 |
| 31613 | Burs | 55 x 100 mm | | 200 |
| 31614 | Impression Tray, Bur Block | 5 135 x 165 mm | | 200 |
| 31615 | Multiple Instruments and cassettes | 4 215 x 380 mm | | 200 |
| 31616 | Hand Instrument (long) | 3 85 x 305 mm | | 200 |
| 31617 | Surgical, Orthodontic | 110 x 305 mm | | 200 |
| 31618 | Multiple Instruments, and small cassettes | 205 x 305 mm | | 200 |
| 31619 | Multiple Instruments | 1 135 x 305 mm | | 200 |
| 31643 | Large cassettes | 265 x 405 mm | | 200 |
| 31647 | Large cassettes (I.M.S. Type) | 335 x 510 mm | | 200 |

Now with Closure

Validation!



This QMS supporting document can be downloaded at: www.dux-dental.com

PeelVue+ sterilisation pouches comply with Council Directive 93/42/EEC; ISO 11607-1/2; DIN EN 868-5 and follow the guidelines of the U.S. CDC, ADA and the German Robert Koch Institute.